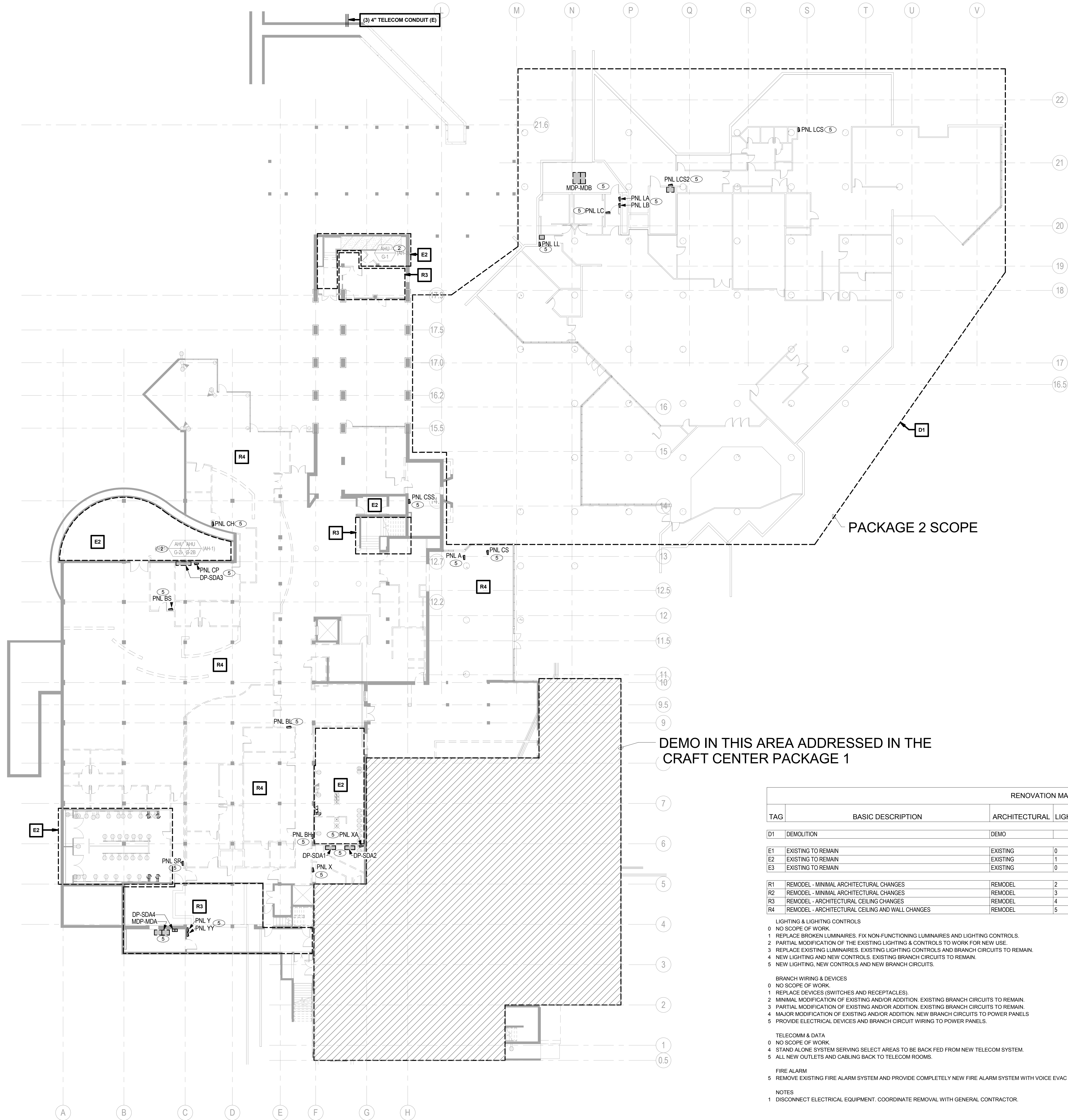


1 DEMO PLAN - GROUND LEVEL - ELECTRICAL

SCALE: 1/16" = 1'-0"



SHEET NOTES

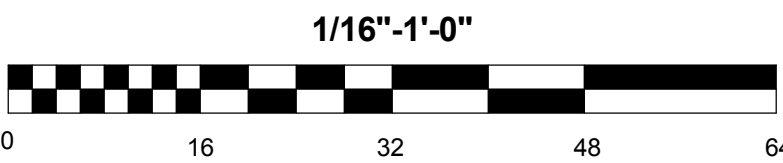
- A REFER TO SHEET DE000 FOR DEMOLITION AND PROJECT GENERAL NOTES, LEGENDS AND ABBREVIATIONS.

KEYED NOTES

1. REPLACE EXISTING BRANCH PANEL AND REFEED FROM NEW DISTRIBUTION. RECONNECT BRANCH CIRCUITS TO NEW PANEL. REFER TO SINGLE LINE DIAGRAMS.
2. EXISTING EQUIPMENT TO REMAIN. REFEED FROM NEW DISTRIBUTION. REFER TO SINGLE LINE DIAGRAMS.
3. ELECTRICAL EQUIPMENT TO REMAIN IN SERVICE UNTIL PACKAGE #4. BACK FEED FROM EQUIPMENT INSTALL IN PRIOR PHASE.
4. DISCONNECT AND RECONNECT PHOTOVOLTAIC EQUIPMENT. PHOTOVOLTAIC EQUIPMENT WILL BE RECONNECTED ON ROOF OF NORTH BAR.
5. REMOVE EQUIPMENT INDICATED. REMOVE CONDUIT AND CONDUCTORS BACK TO PANEL. COORDINATE EQUIPMENT SHUTDOWN WITH OWNER.
6. DISCONNECT EQUIPMENT INDICATED AND RETURN TO OWNER.
7. TENANT SPACE. LIGHTING, POWER AND TELECOM PROVIDED BY TENANT.

RENOVATION MATRIX								
TAG	BASIC DESCRIPTION	ARCHITECTURAL	LIGHTING	LIGHTING CONTROLS	BRANCH WIRING & DEVICES	TELECOM & DATA	FIRE ALARM	COMMENTS
D1	DEMOLITION	DEMO						SEE NOTE 1
E1	EXISTING TO REMAIN	EXISTING	0	0	0	5	5	
E2	EXISTING TO REMAIN	EXISTING	1	2	2	5	5	
E3	EXISTING TO REMAIN	EXISTING	0	0	0	0	5	
R1	REMODEL - MINIMAL ARCHITECTURAL CHANGES	REMODEL	2	2	2	5	5	
R2	REMODEL - MINIMAL ARCHITECTURAL CHANGES	REMODEL	3	3	3	5	5	
R3	REMODEL - ARCHITECTURAL CEILING CHANGES	REMODEL	4	4	3	5	5	
R4	REMODEL - ARCHITECTURAL CEILING AND WALL CHANGES	REMODEL	5	5	4	5	5	

- LIGHTING & LIGHTING CONTROLS
- 0 NO SCOPE OF WORK.
 - 1 REPLACE BROKEN LUMINAIRES. FIX NON-FUNCTIONING LUMINAIRES AND LIGHTING CONTROLS.
 - 2 PARTIAL MODIFICATION OF THE EXISTING LIGHTING & CONTROLS TO WORK FOR NEW USE.
 - 3 REPLACE EXISTING LUMINAIRES. EXISTING LIGHTING CONTROLS AND BRANCH CIRCUITS TO REMAIN.
 - 4 NEW LIGHTING AND NEW CONTROLS. EXISTING BRANCH CIRCUITS TO REMAIN.
 - 5 NEW LIGHTING, NEW CONTROLS AND NEW BRANCH CIRCUITS.
- BRANCH WIRING & DEVICES
- 0 NO SCOPE OF WORK.
 - 1 REPLACE DEVICES (SWITCHES AND RECEPTACLES).
 - 2 MINIMAL MODIFICATION OF EXISTING AND/OR ADDITION. EXISTING BRANCH CIRCUITS TO REMAIN.
 - 3 PARTIAL MODIFICATION OF EXISTING AND/OR ADDITION. EXISTING BRANCH CIRCUITS TO REMAIN.
 - 4 MAJOR MODIFICATION OF EXISTING AND/OR ADDITION. NEW BRANCH CIRCUITS TO POWER PANELS.
 - 5 PROVIDE ELECTRICAL DEVICES AND BRANCH CIRCUIT WIRING TO POWER PANELS.
- TELECOMM & DATA
- 0 NO SCOPE OF WORK.
 - 4 STAND ALONE SYSTEM SERVING SELECT AREAS TO BE BACK FED FROM NEW TELECOM SYSTEM.
 - 5 ALL NEW OUTLETS AND CABLING BACK TO TELECOM ROOMS.
- FIRE ALARM
- 5 REMOVE EXISTING FIRE ALARM SYSTEM AND PROVIDE COMPLETELY NEW FIRE ALARM SYSTEM WITH VOICE EVAC PER CODE.
- NOTES
- 1 DISCONNECT ELECTRICAL EQUIPMENT. COORDINATE REMOVAL WITH GENERAL CONTRACTOR.



ERB MEMORIAL UNION - RENOVATION & ADDITION
PACKAGE 4
UNIVERSITY OF OREGON
13TH AVENUE & UNIVERSITY STREET

REVISIONS

CHECKED BY:
ISSUE DATE: 2014.08.01
PROJECT NO: 11045

DEMO PLAN -
GROUND LEVEL
- ELECTRICAL
DE100

SERA

ARCHITECTURE
URBAN DESIGN + PLANNING
INTERIOR DESIGN

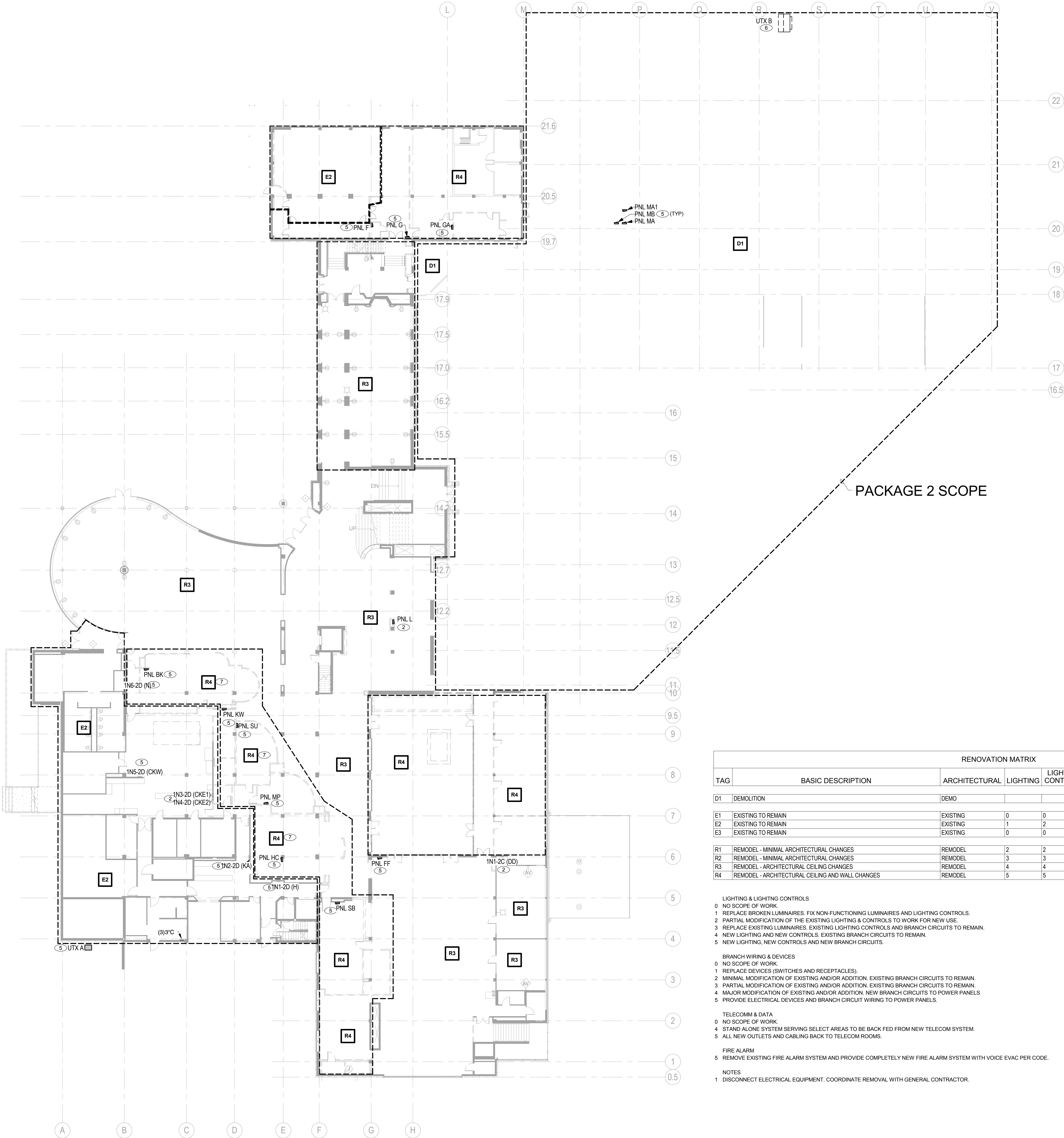
338 NW 5TH AVENUE
PORTLAND OREGON 97209
P: 503.445.7372
F: 503.445.7395
SERAPDX.COM

EXPIRES: 06/30/15
REGISTERED PROFESSIONAL ENGINEER
17507
Kerry R. Heigh
OREGON
KERRY R. HEIGH

GLUMAC

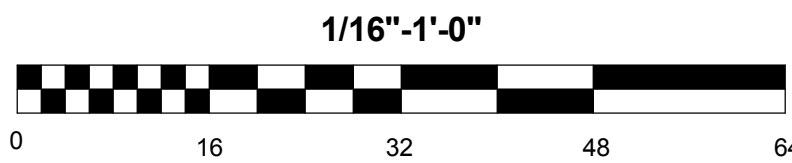
900 SW Fifth Ave., Suite 1600
Portland, OR 97204
T: 503.227.5390 F: 503.274.7674
www.glumac.com
Job No: 02-13-00545
Contact: K. CUNNINGHAM
engineers for a sustainable future

1 DEMO PLAN - LEVEL 1 - ELECTRICAL
SCALE: 1/16" = 1'-0"



RENOVATION MATRIX							
TAG	BASIC DESCRIPTION	ARCHITECTURAL	LIGHTING	CONTROLS	BRANCH WIRING & DEVICES	TELECOM & DATA	FIRE ALARM
D1	DEMOLITION	DEMO					SEE NOTE 1
E1	EXISTING TO REMAIN	EXISTING	0	0	0	5	5
E2	EXISTING TO REMAIN	EXISTING	1	2	2	5	5
E3	EXISTING TO REMAIN	EXISTING	0	0	0	0	5
R1	REMODEL - MINIMAL ARCHITECTURAL CHANGES	REMODEL	2	2	2	5	5
R2	REMODEL - MINIMAL ARCHITECTURAL CHANGES	REMODEL	3	3	3	5	5
R3	REMODEL - ARCHITECTURAL CEILING CHANGES	REMODEL	4	4	3	5	5
R4	REMODEL - ARCHITECTURAL CEILING AND WALL CHANGES	REMODEL	5	5	4	5	5

- LIGHTING & LIGHTING CONTROLS
- 0 NO SCOPE OF WORK.
- 1 REPLACE BROKEN LUMINAIRES. FIX NON-FUNCTIONING LUMINAIRES AND LIGHTING CONTROLS.
- 2 PARTIAL MODIFICATION OF THE EXISTING LIGHTING & CONTROLS TO WORK FOR NEW USE.
- 3 REPLACE EXISTING LUMINAIRES. EXISTING LIGHTING CONTROLS AND BRANCH CIRCUITS TO REMAIN.
- 4 NEW LIGHTING AND NEW CONTROLS. EXISTING BRANCH CIRCUITS TO REMAIN.
- 5 NEW LIGHTING, NEW CONTROLS AND NEW BRANCH CIRCUITS.
- BRANCH WIRING & DEVICES
- 0 NO SCOPE OF WORK.
- 1 REPLACE DEVICES (SWITCHES AND RECEPTACLES).
- 2 MINIMAL MODIFICATION OF EXISTING AND/OR ADDITION. EXISTING BRANCH CIRCUITS TO REMAIN.
- 3 PARTIAL MODIFICATION OF EXISTING AND/OR ADDITION. EXISTING BRANCH CIRCUITS TO REMAIN.
- 4 MAJOR MODIFICATION OF EXISTING AND/OR ADDITION. NEW BRANCH CIRCUITS TO POWER PANELS.
- 5 PROVIDE ELECTRICAL DEVICES AND BRANCH CIRCUIT WIRING TO POWER PANELS.
- TELECOMM & DATA
- 0 NO SCOPE OF WORK.
- 4 STAND ALONE SYSTEM SERVING SELECT AREAS TO BE BACK FED FROM NEW TELECOM SYSTEM.
- 5 ALL NEW OUTLETS AND CABLING BACK TO TELECOM ROOMS.
- FIRE ALARM
- 5 REMOVE EXISTING FIRE ALARM SYSTEM AND PROVIDE COMPLETELY NEW FIRE ALARM SYSTEM WITH VOICE EVAC PER CODE.
- NOTES
- 1 DISCONNECT ELECTRICAL EQUIPMENT. COORDINATE REMOVAL WITH GENERAL CONTRACTOR.



SHEET NOTES

- A. REFER TO SHEET DE000 FOR DEMOLITION AND PROJECT GENERAL NOTES, LEGENDS AND ABBREVIATIONS.

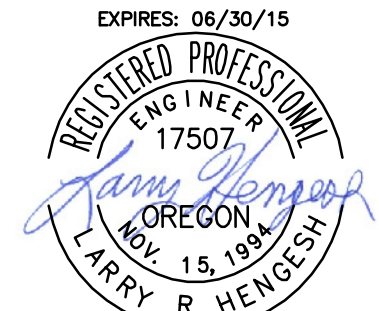
KEYED NOTES

1. REPLACE EXISTING BRANCH PANEL AND REFEED FROM NEW DISTRIBUTION. RECONNECT BRANCH CIRCUITS TO NEW PANEL. REFER TO SINGLE LINE DIAGRAMS.
2. EXISTING EQUIPMENT TO REMAIN. REFEED FROM NEW DISTRIBUTION. REFER TO SINGLE LINE DIAGRAMS.
3. ELECTRICAL EQUIPMENT TO REMAIN IN SERVICE UNTIL PACKAGE #4. BACK FEED FROM EQUIPMENT INSTALL IN PRIOR PHASE.
4. DISCONNECT AND RECONNECT PHOTOVOLTAIC EQUIPMENT. PHOTOVOLTAIC EQUIPMENT WILL BE RECONNECTED ON ROOF OF NORTH BAR.
5. REMOVE EQUIPMENT INDICATED. REMOVE CONDUIT AND CONDUCTORS BACK TO PANEL. COORDINATE EQUIPMENT SHUTDOWN WITH OWNER.
6. DISCONNECT EQUIPMENT INDICATED AND RETURN TO OWNER.
7. TENANT SPACE. LIGHTING, POWER AND TELECOM PROVIDED BY TENANT.

SERA

ARCHITECTURE
URBAN DESIGN + PLANNING
INTERIOR DESIGN

338 NW 5TH AVENUE
PORTLAND OREGON 97208
P: 503.445.7372
F: 503.445.7395
SERAPDX.COM



GLUMAC

900 SW Fifth Ave., Suite 1600
Portland, OR 97204
T: 503.227.5390
www.glumac.com
F: 503.274.7674
Job No: 02-13-00545
Contact: K. CUNNINGHAM
engineers for a sustainable future

ERB MEMORIAL UNION - RENOVATION & ADDITION
PACKAGE 4
UNIVERSITY OF OREGON
13TH AVENUE & UNIVERSITY STREET

REVISIONS

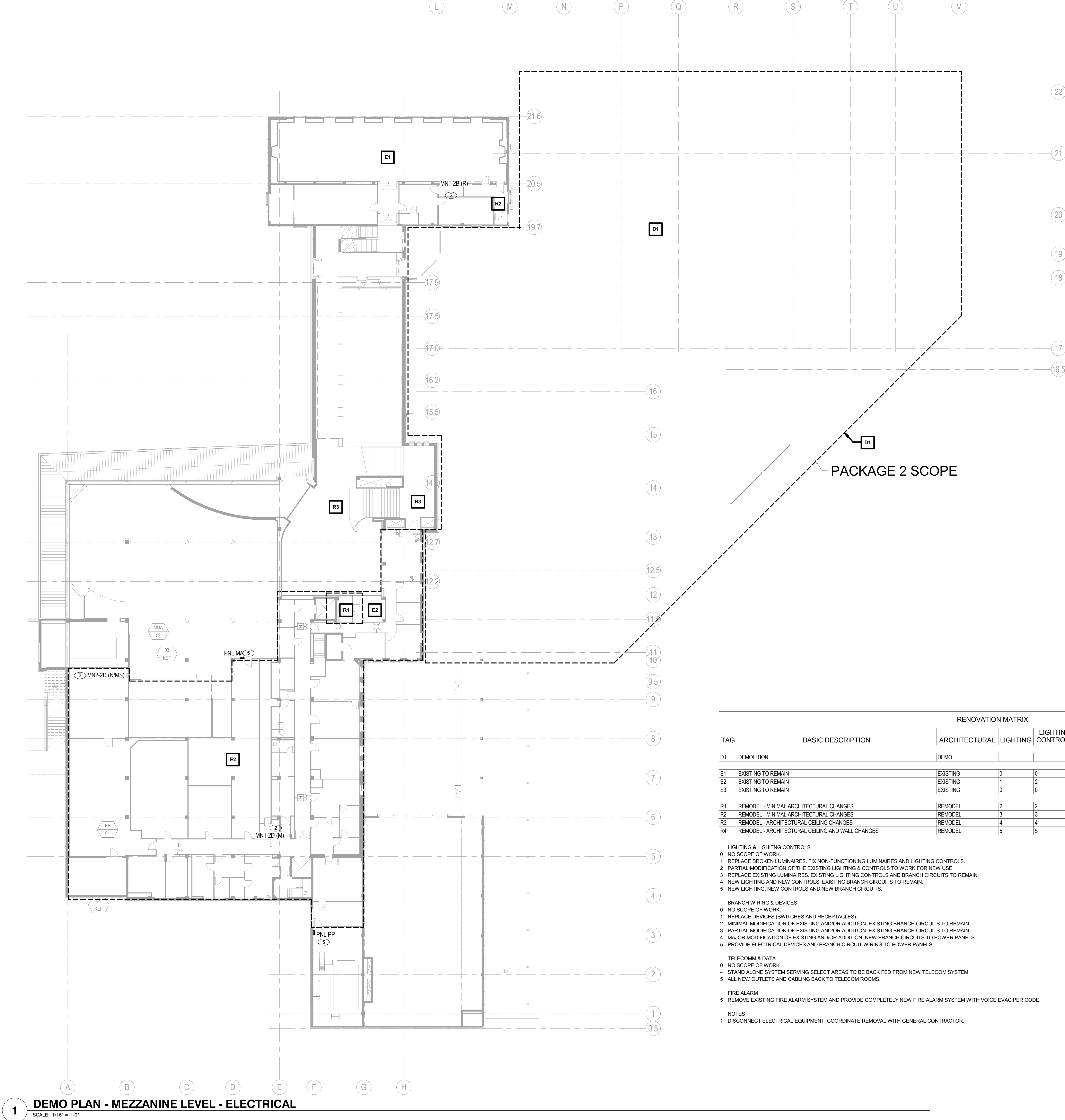
CHECKED BY:
ISSUE DATE: 2014.08.01
PROJECT NO: 11045

DEMO PLAN -
LEVEL 1 -
ELECTRICAL
DE101

8/1/2014 2:23:49 PM

These drawings and their content are the property of SERA Architects Inc. and are to be utilized on this project. Reproduction of any part of this material, without the express written permission of SERA Architects Inc. is prohibited.

SERA ARCHITECTS COPYRIGHT 2012



SHEET NOTES

- A. REFER TO SHEET DE000 FOR DEMOLITION AND PROJECT GENERAL NOTES, LEGENDS AND ABBREVIATIONS.

KEYED NOTES

1. REPLACE EXISTING BRANCH PANEL AND REFEED FROM NEW DISTRIBUTION. RECONNECT BRANCH CIRCUITS TO NEW PANEL. REFER TO SINGLE LINE DIAGRAMS.
2. EXISTING EQUIPMENT TO REMAIN. REFEED FROM NEW DISTRIBUTION. REFER TO SINGLE LINE DIAGRAMS.
3. ELECTRICAL EQUIPMENT TO REMAIN IN SERVICE UNTIL PACKAGE #4. BACK FEED FROM EQUIPMENT INSTALL IN PRIOR PHASE.
4. DISCONNECT AND RECONNECT PHOTOVOLTAIC EQUIPMENT. PHOTOVOLTAIC EQUIPMENT WILL BE RECONNECTED ON ROOF OF NORTH BAR.
5. REMOVE EQUIPMENT INDICATED. REMOVE CONDUIT AND CONDUCTORS BACK TO PANEL. COORDINATE EQUIPMENT SHUTDOWN WITH OWNER.
6. DISCONNECT EQUIPMENT INDICATED AND RETURN TO OWNER.
7. TENANT SPACE. LIGHTING, POWER AND TELECOM PROVIDED BY TENANT.

RENOVATION MATRIX								
TAG	BASIC DESCRIPTION	ARCHITECTURAL	LIGHTING	LIGHTING CONTROLS	BRANCH WIRING & DEVICES	TELECOM & DATA	FIRE ALARM	COMMENTS
D1	DEMOLITION	DEMO						SEE NOTE 1
E1	EXISTING TO REMAIN	EXISTING	0	0	0	5	5	
E2	EXISTING TO REMAIN	EXISTING	1	2	2	5	5	
E3	EXISTING TO REMAIN	EXISTING	0	0	0	0	5	
R1	REMODEL - MINIMAL ARCHITECTURAL CHANGES	REMODEL	2	2	2	5	5	
R2	REMODEL - MINIMAL ARCHITECTURAL CHANGES	REMODEL	3	3	3	5	5	
R3	REMODEL - ARCHITECTURAL CEILING CHANGES	REMODEL	4	4	3	5	5	
R4	REMODEL - ARCHITECTURAL CEILING AND WALL CHANGES	REMODEL	5	5	4	5	5	

- LIGHTING & LIGHTING CONTROLS
- 0 NO SCOPE OF WORK.
- 1 REPLACE BROKEN LUMINAIRES. FIX NON-FUNCTIONING LUMINAIRES AND LIGHTING CONTROLS.
- 2 PARTIAL MODIFICATION OF THE EXISTING LIGHTING & CONTROLS TO WORK FOR NEW USE.
- 3 REPLACE EXISTING LUMINAIRES. EXISTING LIGHTING CONTROLS AND BRANCH CIRCUITS TO REMAIN.
- 4 NEW LIGHTING AND NEW CONTROLS. EXISTING BRANCH CIRCUITS TO REMAIN.
- 5 NEW LIGHTING, NEW CONTROLS AND NEW BRANCH CIRCUITS.
- BRANCH WIRING & DEVICES
- 0 NO SCOPE OF WORK.
- 1 REPLACE DEVICES (SWITCHES AND RECEPTACLES).
- 2 MINIMAL MODIFICATION OF EXISTING AND/OR ADDITION. EXISTING BRANCH CIRCUITS TO REMAIN.
- 3 PARTIAL MODIFICATION OF EXISTING AND/OR ADDITION. EXISTING BRANCH CIRCUITS TO REMAIN.
- 4 MAJOR MODIFICATION OF EXISTING AND/OR ADDITION. NEW BRANCH CIRCUITS TO POWER PANELS.
- 5 PROVIDE ELECTRICAL DEVICES AND BRANCH CIRCUIT WIRING TO POWER PANELS.
- TELECOMM & DATA
- 0 NO SCOPE OF WORK.
- 1 STAND ALONE SYSTEM SERVING SELECT AREAS TO BE BACK FED FROM NEW TELECOM SYSTEM.
- 5 ALL NEW OUTLETS AND CABLING BACK TO TELECOM ROOMS.
- FIRE ALARM
- 5 REMOVE EXISTING FIRE ALARM SYSTEM AND PROVIDE COMPLETELY NEW FIRE ALARM SYSTEM WITH VOICE EVAC PER CODE.
- NOTES
- 1 DISCONNECT ELECTRICAL EQUIPMENT. COORDINATE REMOVAL WITH GENERAL CONTRACTOR.



1 DEMO PLAN - MEZZANINE LEVEL - ELECTRICAL

SCALE: 1/16" = 1'-0"

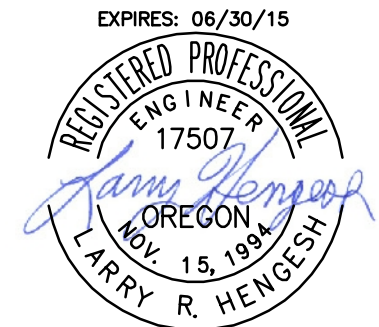


ARCHITECTURE

URBAN DESIGN + PLANNING

INTERIOR DESIGN

338 NW 5TH AVENUE
PORTLAND OREGON 97209
P: 503.445.7372
F: 503.445.7395
SERAPDX.COM



GLUMAC

900 SW Fifth Ave., Suite 1600
Portland, OR 97204
T: 503.227.5390 F: 503.274.7674
www.glumac.com
Job No.: 02-13-00545
Contact: K. CUNNINGHAM
engineers for a sustainable future™

ERB MEMORIAL UNION - RENOVATION & ADDITION

PACKAGE 4

UNIVERSITY OF OREGON

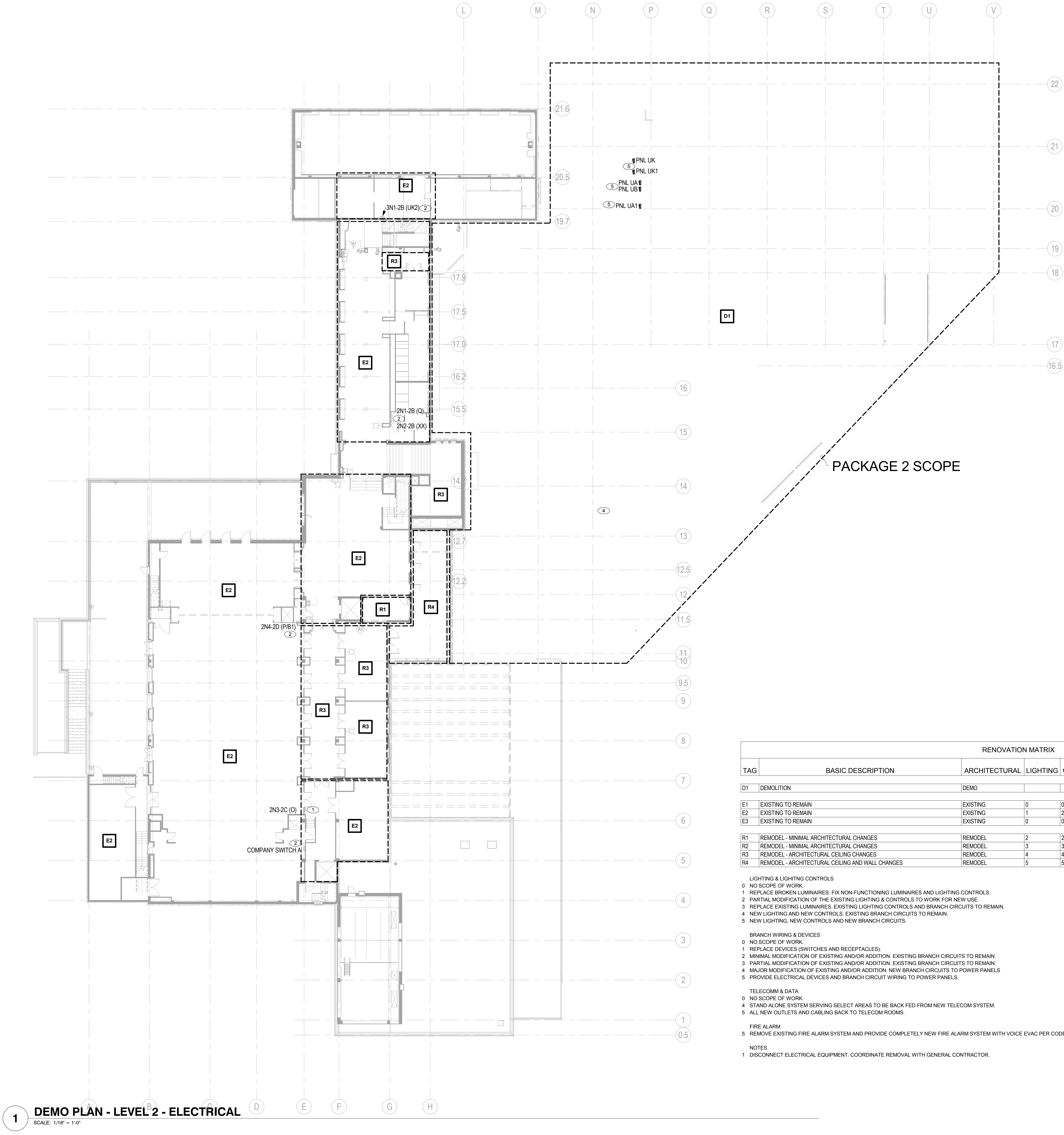
13TH AVENUE & UNIVERSITY STREET

REVISIONS

CHECKED BY:
ISSUE DATE: 2014.08.01
PROJECT NO.: 11045

DEMO PLAN -
MEZZANINE
LEVEL -
ELECTRICAL

DE101m



SHEET NOTES

- A REFER TO SHEET DE000 FOR DEMOLITION AND PROJECT GENERAL NOTES, LEGENDS AND ABBREVIATIONS.

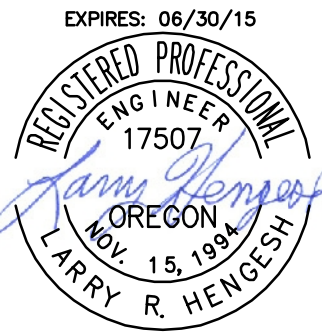
KEYED NOTES

1. REPLACE EXISTING BRANCH PANEL AND REFEED FROM NEW DISTRIBUTION. RECONNECT BRANCH CIRCUITS TO NEW PANEL. REFER TO SINGLE LINE DIAGRAMS.
2. EXISTING EQUIPMENT TO REMAIN. REFEED FROM NEW DISTRIBUTION. REFER TO SINGLE LINE DIAGRAMS.
3. ELECTRICAL EQUIPMENT TO REMAIN IN SERVICE UNTIL PACKAGE #4. BACK FEED FROM EQUIPMENT INSTALL IN PRIOR PHASE.
4. DISCONNECT AND RECONNECT PHOTOVOLTAIC EQUIPMENT. PHOTOVOLTAIC EQUIPMENT WILL BE RECONNECTED ON ROOF OF NORTH BAR.
5. REMOVE EQUIPMENT INDICATED. REMOVE CONDUIT AND CONDUCTORS BACK TO PANEL. COORDINATE EQUIPMENT SHUTDOWN WITH OWNER.
6. DISCONNECT EQUIPMENT INDICATED AND RETURN TO OWNER.
7. TENANT SPACE. LIGHTING, POWER AND TELECOM PROVIDED BY TENANT.

SERA

ARCHITECTURE
URBAN DESIGN + PLANNING
INTERIOR DESIGN

338 NW 5TH AVENUE
PORTLAND OREGON 97209
P: 503.445.7372
F: 503.445.7395
SERAPDX.COM



GLUMAC

900 SW Fifth Ave., Suite 1600
Portland, OR 97204
T: 503.227.5360 F: 503.274.7674
www.glumac.com
Job No.: 02-13-00545
Contact: K. CUNNINGHAM

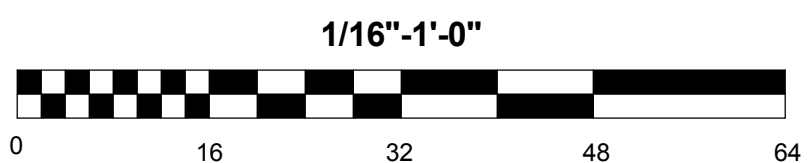
engineers for a sustainable future™

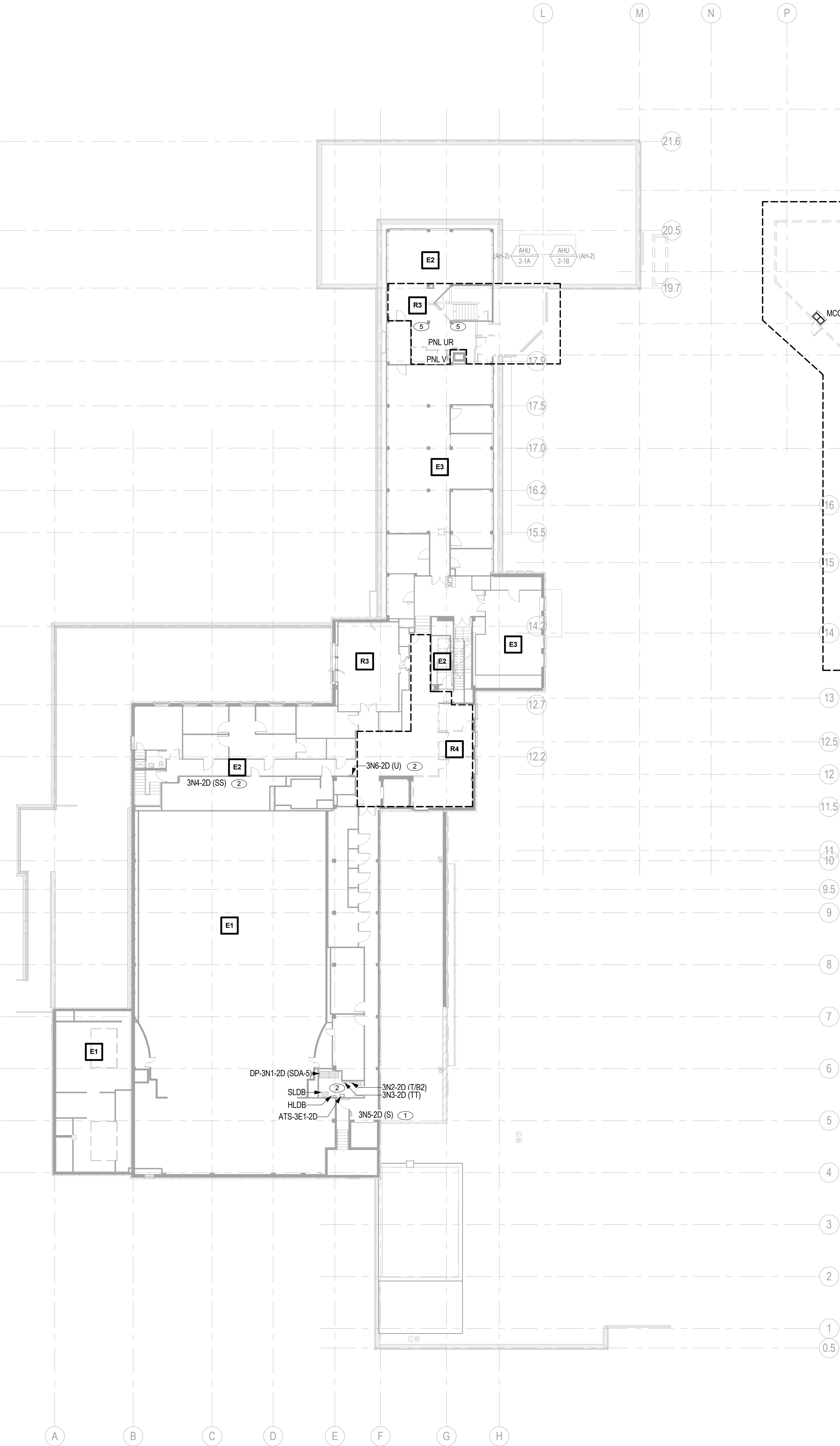
ERB MEMORIAL UNION - RENOVATION & ADDITION PACKAGE 4 UNIVERSITY OF OREGON 13TH AVENUE & UNIVERSITY STREET

REVISIONS

CHECKED BY:
ISSUE DATE: 2014.08.01
PROJECT NO.: 11045

DEMO PLAN -
LEVEL 2 -
ELECTRICAL
DE102





1 DEMO PLAN - LEVEL 3 - ELECTRICAL

SCALE: 1/16" = 1'-0"

SHEET NOTES

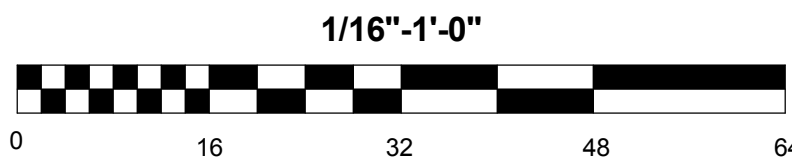
- A REFER TO SHEET DEMO FOR DEMOLITION AND PROJECT GENERAL NOTES, LEGENDS AND ABBREVIATIONS.

KEYED NOTES

1. REPLACE EXISTING BRANCH PANEL AND REFEED FROM NEW DISTRIBUTION. RECONNECT BRANCH CIRCUITS TO NEW PANEL. REFER TO SINGLE LINE DIAGRAMS.
2. EXISTING EQUIPMENT TO REMAIN. REFEED FROM NEW DISTRIBUTION. REFER TO SINGLE LINE DIAGRAMS.
3. ELECTRICAL EQUIPMENT TO REMAIN IN SERVICE UNTIL PACKAGE #4. BACK FEED FROM EQUIPMENT INSTALL IN PRIOR PHASE.
4. DISCONNECT AND RECONNECT PHOTOVOLTAIC EQUIPMENT. PHOTOVOLTAIC EQUIPMENT WILL BE RECONNECTED ON ROOF OF NORTH BAY.
5. REMOVE EQUIPMENT INDICATED. REMOVE CONDUIT AND CONDUCTORS BACK TO PANEL. COORDINATE EQUIPMENT SHUTDOWN WITH OWNER.
6. DISCONNECT EQUIPMENT INDICATED AND RETURN TO OWNER.
7. TENANT SPACE. LIGHTING, POWER AND TELECOM PROVIDED BY TENANT.

RENOVATION MATRIX								
TAG	BASIC DESCRIPTION	ARCHITECTURAL	LIGHTING	LIGHTING CONTROLS	BRANCH WIRING & DEVICES	TELECOM & DATA	FIRE ALARM	COMMENTS
D1	DEMOLITION	DEMO						SEE NOTE 1
E1	EXISTING TO REMAIN	EXISTING	0	0	0	5	5	
E2	EXISTING TO REMAIN	EXISTING	1	2	2	5	5	
E3	EXISTING TO REMAIN	EXISTING	0	0	0	0	5	
R1	REMODEL - MINIMAL ARCHITECTURAL CHANGES	REMODEL	2	2	2	5	5	
R2	REMODEL - MINIMAL ARCHITECTURAL CHANGES	REMODEL	3	3	3	5	5	
R3	REMODEL - ARCHITECTURAL CEILING CHANGES	REMODEL	4	4	3	5	5	
R4	REMODEL - ARCHITECTURAL CEILING AND WALL CHANGES	REMODEL	5	5	4	5	5	

- LIGHTING & LIGHTING CONTROLS
- 0 NO SCOPE OF WORK.
- 1 REPLACE BROKEN LUMINAIRES. FIX NON-FUNCTIONING LUMINAIRES AND LIGHTING CONTROLS.
- 2 PARTIAL MODIFICATION OF THE EXISTING LIGHTING & CONTROLS TO WORK FOR NEW USE.
- 3 REPLACE EXISTING LUMINAIRES. EXISTING LIGHTING CONTROLS AND BRANCH CIRCUITS TO REMAIN.
- 4 NEW LIGHTING AND NEW CONTROLS. EXISTING BRANCH CIRCUITS TO REMAIN.
- 5 NEW LIGHTING, NEW CONTROLS AND NEW BRANCH CIRCUITS.
- BRANCH WIRING & DEVICES
- 0 NO SCOPE OF WORK.
- 1 REPLACE DEVICES (SWITCHES AND RECEPTACLES).
- 2 MINIMAL MODIFICATION OF EXISTING AND/OR ADDITION. EXISTING BRANCH CIRCUITS TO REMAIN.
- 3 PARTIAL MODIFICATION OF EXISTING AND/OR ADDITION. EXISTING BRANCH CIRCUITS TO REMAIN.
- 4 MAJOR MODIFICATION OF EXISTING AND/OR ADDITION. NEW BRANCH CIRCUITS TO POWER PANELS.
- 5 PROVIDE ELECTRICAL DEVICES AND BRANCH CIRCUIT WIRING TO POWER PANELS.
- TELECOMM & DATA
- 0 NO SCOPE OF WORK.
- 1 STAND ALONE SYSTEM SERVING SELECT AREAS TO BE BACK FED FROM NEW TELECOM SYSTEM.
- 2 ALL NEW OUTLETS AND CABLING BACK TO TELECOM ROOMS.
- FIRE ALARM
- 5 REMOVE EXISTING FIRE ALARM SYSTEM AND PROVIDE COMPLETELY NEW FIRE ALARM SYSTEM WITH VOICE EVAC PER CODE.
- NOTES
- 1 DISCONNECT ELECTRICAL EQUIPMENT. COORDINATE REMOVAL WITH GENERAL CONTRACTOR.



SERA

ARCHITECTURE

URBAN DESIGN + PLANNING

INTERIOR DESIGN

338 NW 5TH AVENUE
PORTLAND OREGON 97209
P: 503.445.7372
F: 503.445.7395
SERAPDX.COM

EXPIRES: 06/30/15

REGISTERED PROFESSIONAL
ENGINEER
17507
Kerry R. Heigh
OREGON
EXPIRES: 12/31/15

GLUMAC

900 SW Fifth Ave., Suite 1600
Portland, OR 97204
T: 503.227.5390 F: 503.274.7674
www.glumac.com
Job No.: 02-13-00545
Contact: K. CUNNINGHAM
engineers for a sustainable future

ERB MEMORIAL UNION - RENOVATION & ADDITION

PAGE 4

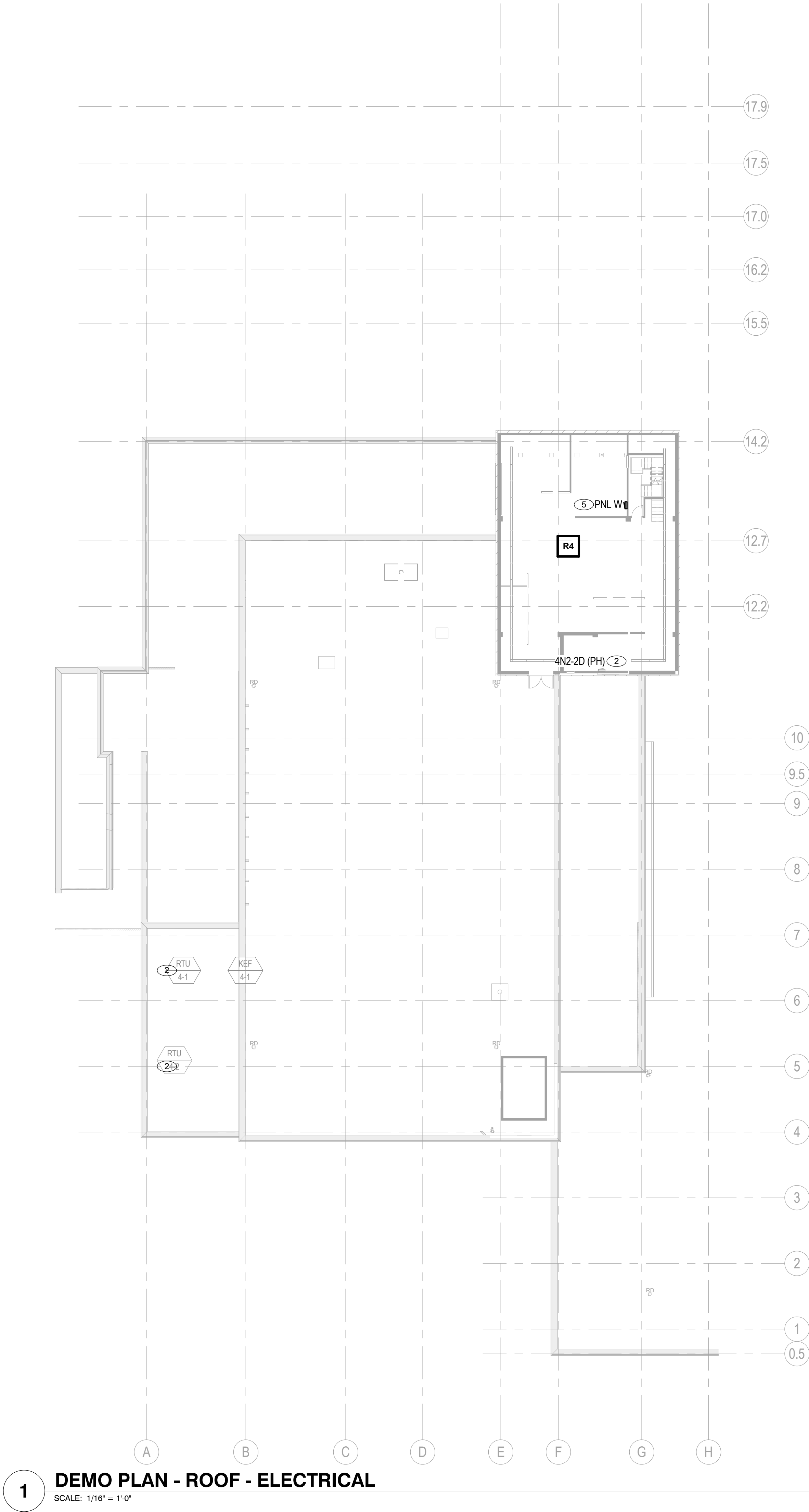
UNIVERSITY OF OREGON
13TH AVENUE & UNIVERSITY STREET

REVISIONS

CHECKED BY:
ISSUE DATE: 2014.08.01
PROJECT NO.: 11045

DEMO PLAN -
LEVEL 3 -
ELECTRICAL

DE103



SHEET NOTES

A. REFER TO SHEET DE000 FOR DEMOLITION AND PROJECT GENERAL NOTES, LEGENDS AND ABBREVIATIONS.

KEYED NOTES

1. REPLACE EXISTING BRANCH PANEL AND REFEED FROM NEW DISTRIBUTION. RECONNECT BRANCH CIRCUITS TO NEW PANEL. REFER TO SINGLE LINE DIAGRAMS.
2. EXISTING EQUIPMENT TO REMAIN. REFEED FROM NEW DISTRIBUTION. REFER TO SINGLE LINE DIAGRAMS.
3. ELECTRICAL EQUIPMENT TO REMAIN IN SERVICE UNTIL PACKAGE #4. BACK FEED FROM EQUIPMENT INSTALL IN PRIOR PHASE.
4. DISCONNECT AND RECONNECT PHOTOVOLTAIC EQUIPMENT. PHOTOVOLTAIC EQUIPMENT WILL BE RECONNECTED ON ROOF OF NORTH BAR.
5. REMOVE EQUIPMENT INDICATED. REMOVE CONDUIT AND CONDUCTORS BACK TO PANEL. COORDINATE EQUIPMENT SHUTDOWN WITH OWNER.
6. DISCONNECT EQUIPMENT INDICATED AND RETURN TO OWNER.
7. TENANT SPACE. LIGHTING, POWER AND TELECOM PROVIDED BY TENANT.

RENOVATION MATRIX								
TAG	BASIC DESCRIPTION	ARCHITECTURAL	LIGHTING	LIGHTING CONTROLS	BRANCH WIRING & DEVICES	TELECOM & DATA	FIRE ALARM	COMMENTS
D1	DEMOLITION	DEMO						SEE NOTE 1
E1	EXISTING TO REMAIN	EXISTING	0	0	0	5	5	
E2	EXISTING TO REMAIN	EXISTING	1	2	2	5	5	
E3	EXISTING TO REMAIN	EXISTING	0	0	0	0	5	
R1	REMODEL - MINIMAL ARCHITECTURAL CHANGES	REMODEL	2	2	2	5	5	
R2	REMODEL - MINIMAL ARCHITECTURAL CHANGES	REMODEL	3	3	3	5	5	
R3	REMODEL - ARCHITECTURAL CEILING CHANGES	REMODEL	4	4	3	5	5	
R4	REMODEL - ARCHITECTURAL CEILING AND WALL CHANGES	REMODEL	5	5	4	5	5	

- LIGHTING & LIGHTING CONTROLS
- 0 NO SCOPE OF WORK.
 - 1 REPLACE BROKEN LUMINAIRES. FIX NON-FUNCTIONING LUMINAIRES AND LIGHTING CONTROLS.
 - 2 PARTIAL MODIFICATION OF THE EXISTING LIGHTING & CONTROLS TO WORK FOR NEW USE.
 - 3 REPLACE EXISTING LUMINAIRES. EXISTING LIGHTING CONTROLS AND BRANCH CIRCUITS TO REMAIN.
 - 4 NEW LIGHTING AND NEW CONTROLS. EXISTING BRANCH CIRCUITS TO REMAIN.
 - 5 NEW LIGHTING, NEW CONTROLS AND NEW BRANCH CIRCUITS.
- BRANCH WIRING & DEVICES
- 0 NO SCOPE OF WORK.
 - 1 REPLACE DEVICES (SWITCHES AND RECEPTACLES).
 - 2 MINIMAL MODIFICATION OF EXISTING AND/OR ADDITION. EXISTING BRANCH CIRCUITS TO REMAIN.
 - 3 PARTIAL MODIFICATION OF EXISTING AND/OR ADDITION. EXISTING BRANCH CIRCUITS TO REMAIN.
 - 4 MAJOR MODIFICATION OF EXISTING AND/OR ADDITION. NEW BRANCH CIRCUITS TO POWER PANELS.
 - 5 PROVIDE ELECTRICAL DEVICES AND BRANCH CIRCUIT WIRING TO POWER PANELS.
- TELECOMM & DATA
- 0 NO SCOPE OF WORK.
 - 4 STAND ALONE SYSTEM SERVING SELECT AREAS TO BE BACK FED FROM NEW TELECOM SYSTEM.
 - 5 ALL NEW OUTLETS AND CABLING BACK TO TELECOM ROOMS.
- FIRE ALARM
- 5 REMOVE EXISTING FIRE ALARM SYSTEM AND PROVIDE COMPLETELY NEW FIRE ALARM SYSTEM WITH VOICE EVAC PER CODE.
- NOTES
- 1 DISCONNECT ELECTRICAL EQUIPMENT. COORDINATE REMOVAL WITH GENERAL CONTRACTOR.



SERA

ARCHITECTURE
URBAN DESIGN + PLANNING
INTERIOR DESIGN

338 NW 5TH AVENUE
PORTLAND OREGON 97209
P: 503.445.7372
F: 503.445.7395
SERAPDX.COM

EXPIRES: 06/30/15

GLUMAC

900 SW Fifth Ave., Suite 1600
Portland, OR 97204
T: 503.227.5360 F: 503.274.7674
www.glumac.com
Job No.: 02-13-00545
Contact: K. CUNNINGHAM

engineers for a sustainable future

ERB MEMORIAL UNION - RENOVATION & ADDITION
PACKAGE 4
UNIVERSITY OF OREGON
13TH AVENUE & UNIVERSITY STREET

REVISIONS

CHECKED BY:
ISSUE DATE: 2014.08.01
PROJECT NO.: 11045

DEMO PLAN -
ROOF -
ELECTRICAL
DE110